

Lorsque humanisme et efficacité se rencontrent!



Fragilities and co-construction in the communities

CLC - Vancouver

In partnership with



*Le Rameau's research work are released through the support of
the Bettencourt Schueller Foundation and the Caisse des Dépôts*





LE RAMEAU

Le RAMEAU, Who we are

- Le RAMEAU is an applied research laboratory specialized in alliances for the common good between associations and businesses.
- Le RAMEAU works particularly on the development of these alliances in the communities through territorial experimentations, studies, and the animation of prospective exchanging times.
- Our objective as a general interest association is to spread as largely as possible the results of our work of research.

Le RAMEAU in a few words

General Interest Association,
created in march 2006

10 years of applied research

More than **400 beneficiary organizations**

780 field experimentations

36 reference studies

22 groups of prospective reflection

37 M€ mobilized for the scaling up of social innovations

1,5 M€ of budget / 8 permanent persons
& 8 permanent contributors.





The needs of the communities

Co-construction solutions

The impacts of co-construction

The priority fragilities in the communities

Economic criteria

- Employment/unemployment/ insertion
- Economic development
- Living standards purchasing power

Social criteria

- Poor housing
- Poverty fight against exclusion
- Diversity - disability
- Aging intergenerational
- Isolation Social link

Societal criteria

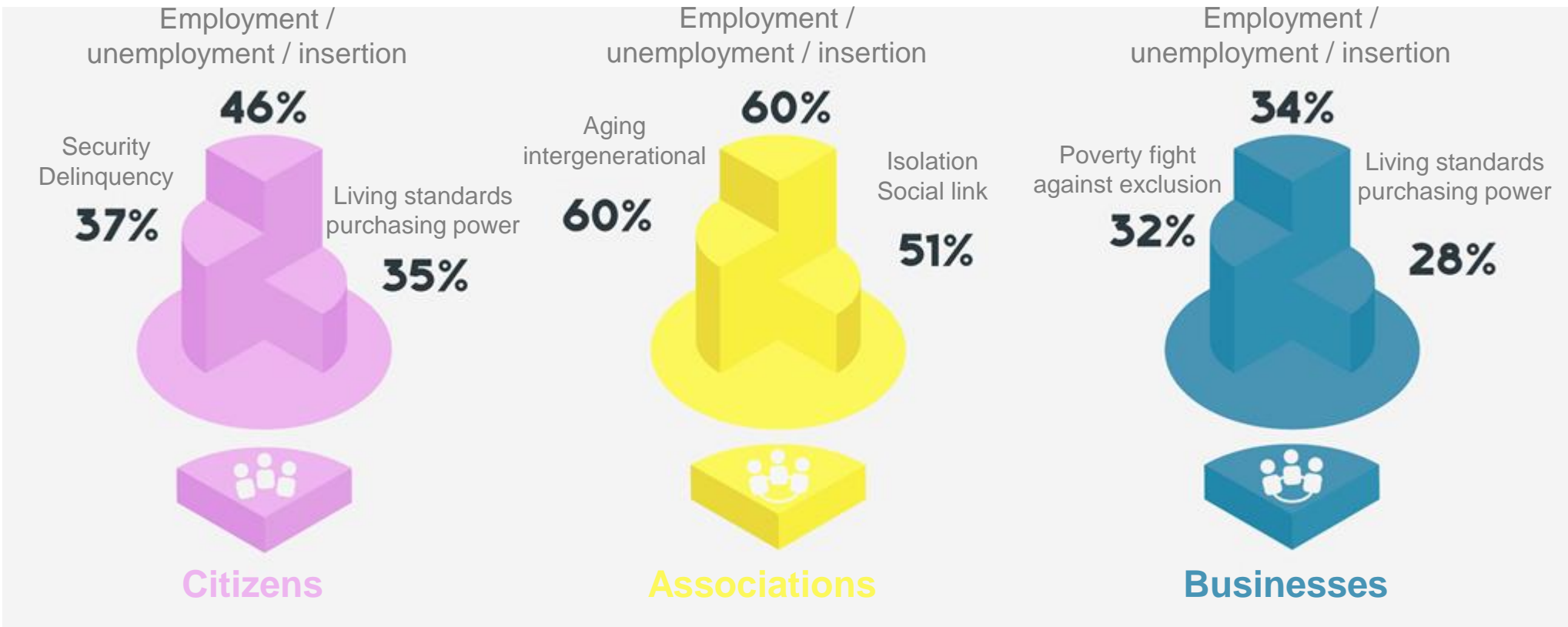
- Security Delinquency
- Education
- Mobility -Transports
- Health
- Access to digital
- Culture Hobbies

Environmental criteria

- Environment
- Pollution
- Energetic transition

16 questioned themes

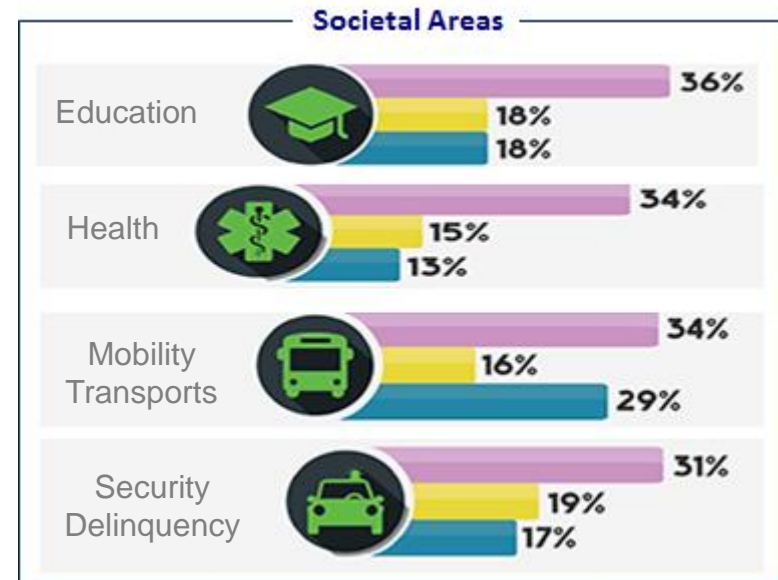
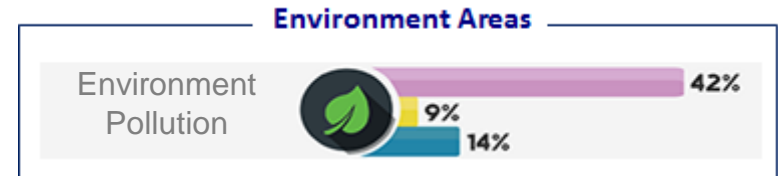
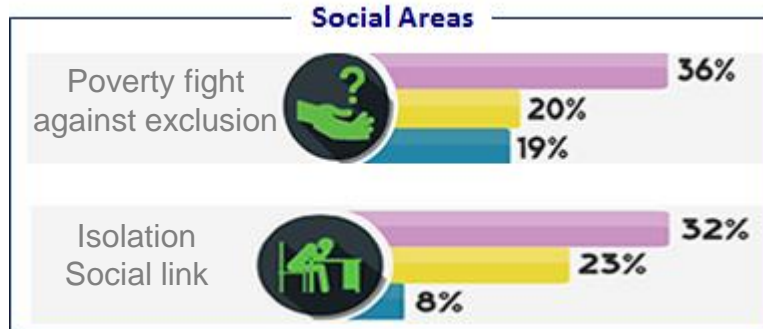
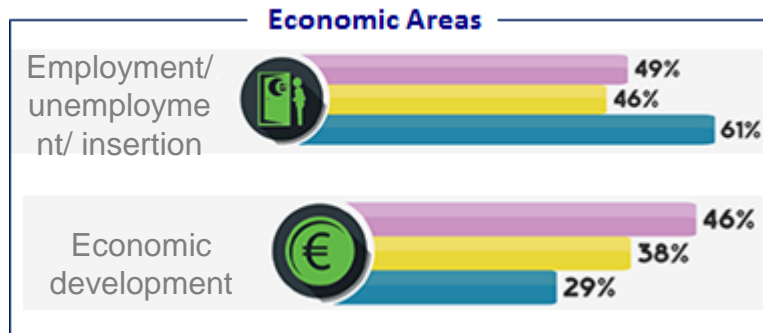
The priority areas of fragility in the communities seen by 3 actors



Three specific perceptions.

A common vision around the employment theme

The main focus areas to co-construct



A duty of alliances in a variety of areas and a common vision on economical fragilities

Partnerships, a source of innovation



Citizens

69%



Associations

86%



Businesses

81%

Partnerships between associations & businesses are praised as a way of inventing innovative solutions to face 21st century challenges

The needs of the communities

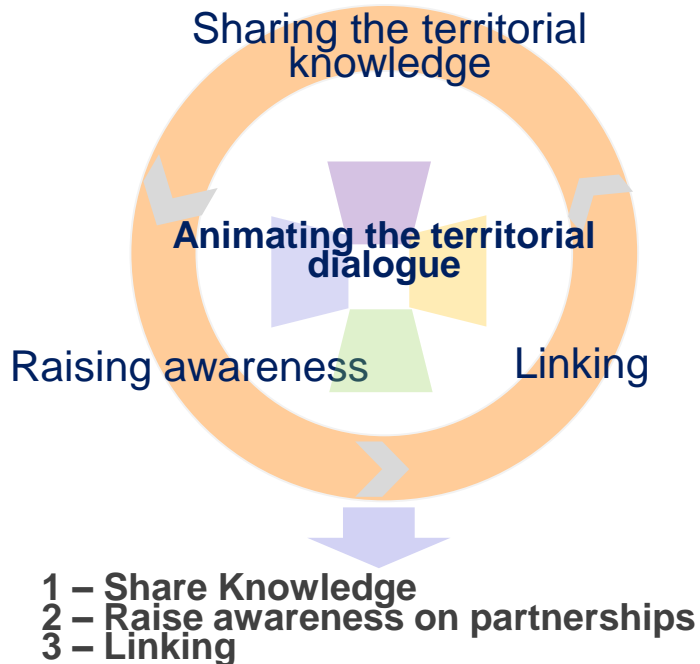


Co-construction solutions

The impacts of co-construction

Co-construction solutions : *The panorama of the engineering*

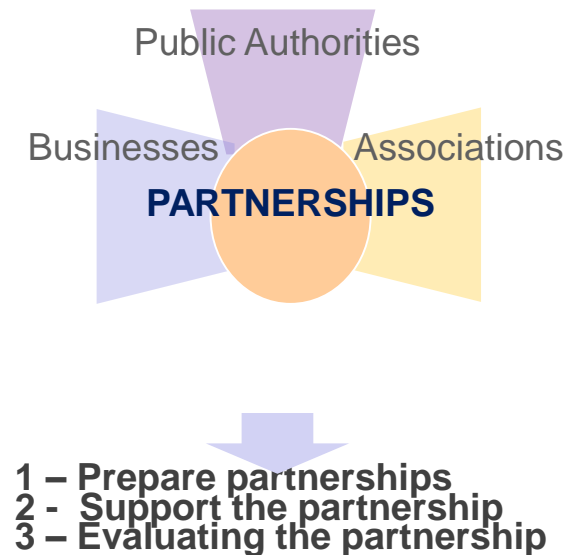
Territorial Animation



Collective Experimentation



Supporting organisations



3 engineering solutions that the territory needs to co-construct

Territorial Animation

AGIR ENSEMBLE A CHARENTON – SAINT-MAURICE

Cooperation dynamic initiated by the the « Communauté de communes » de Charenton Saint Maurice

- 150 actors mobilized
- 3 identified axis of cooperation : (poverty, insertion, disability)

Collective Experimentation

SILVER GEEK

Digital project at the service of seniors initiated and developed by associations and businesses of the Poitou Charentes region

- 18 institutions welcoming involved seniors

Accompagner les organisations

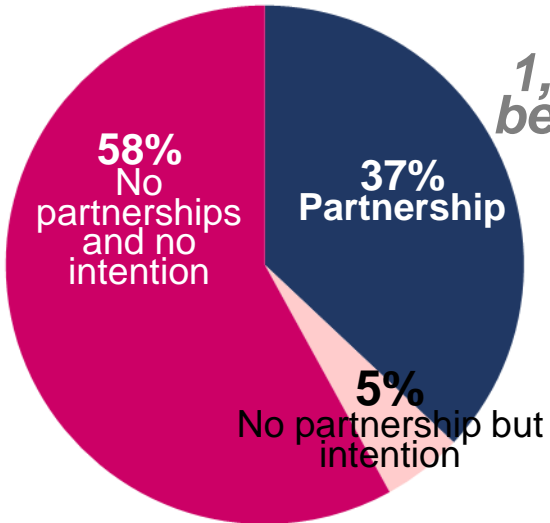
LABO DES PARTENARIATS ALSACIEN

Structure who supports businesses and associations from the Alsace region in the setting up of partnerships

3 illustrations

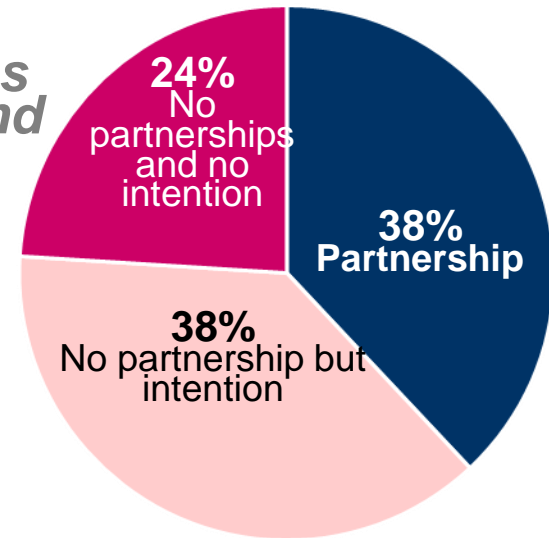
The current state of partnerships in France

From the business side



*1,2 million partnerships
between businesses and
associations*

From the associations side



In 5 years, the rate of partnerships has increased by 8,5 points

53% of employing associations have partnerships, with a strong increase since 2011 (+ 7 points)

A growing movement in the communities

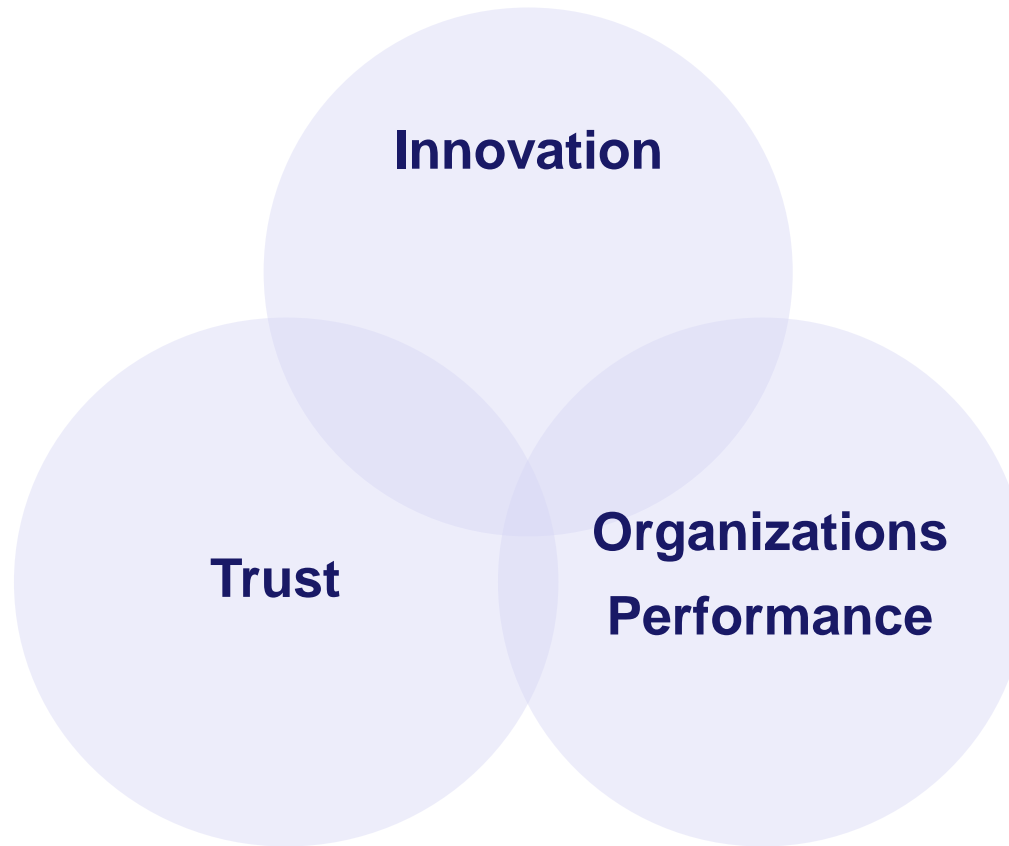
The needs of the communities

Co-construction solutions



The impacts of co-construction

The impacts of co-construction



3 natures of impacts
